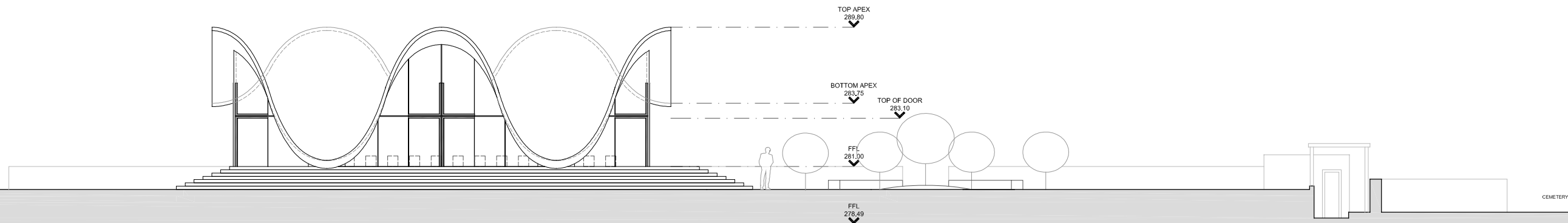
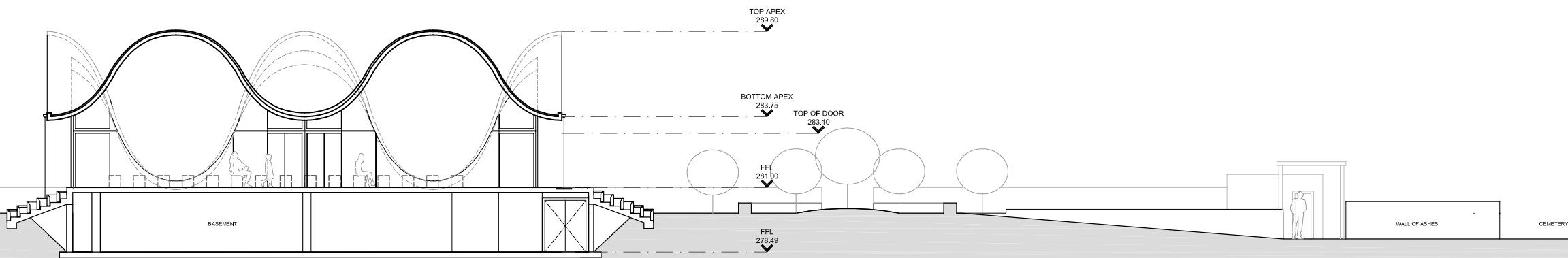


0 1 2 3 4 6 8m

this scale bar should measure 6cm/4cm when printed @ A1/A3



SECTION E
scale 1:100



SECTION F
scale 1:100

NOTES
ALL DIMENSIONS TO BE CHECKED
ON SITE PRIOR TO COMMENCE-
MENT OF WORK. NO SCALING.
ANY DISCREPANCIES TO BE
REPORTED TO THE ARCHITECT. ©

P3: General Revisions 06.12.13
P2: General Revisions 10.12.12
P1: First Issue 14.11.12

INFORMATION

STEYN & CO CONSULTING ARCHITECTS (Pty) Ltd
1115 11th Street, Suite 101, Rosebank, Johannesburg 2196
T: +27 (0) 11 782 3000 F: +27 (0) 11 782 3001



PROJECT NAME
P1001 | BUSHMENS VALLEY
REDEVELOPMENT
BUILDING 1: CHAPEL

DRAWING
SECTIONS

DRAWING NO.
P1001 | G | 1 | 201 | P3

DATE
DECEMBER 2012

SCALE
1:100 @ A1, 1:200 @ A3

DRAWN BY
JF

CHECKED BY
CS

this scale bar should measure 6cm/4cm when printed @ A1/A3

